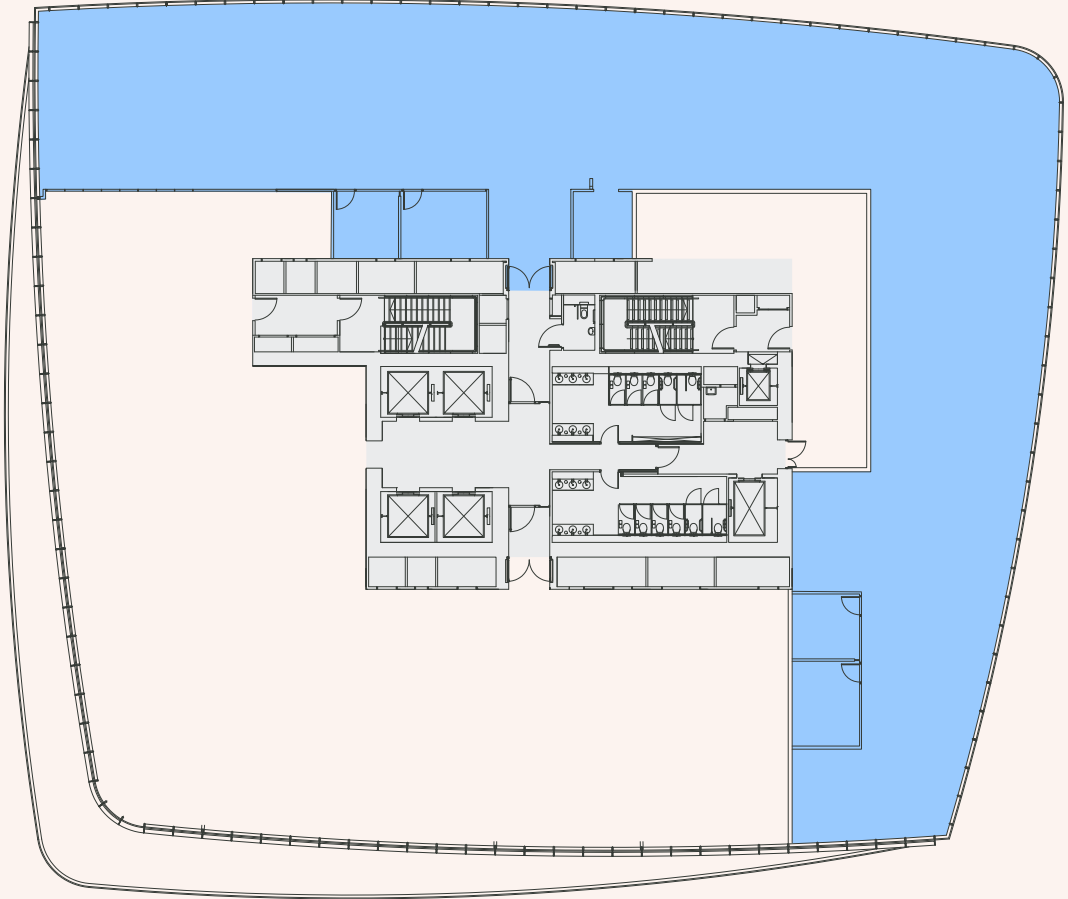


# Layout Plans

## Part 16th Floor

c.10,000 sq ft (c.929 sq m)

Floor	sq ft	sq m
Part 16th	c.10,000	c.929
10th	19,536	1,815
9th	19,536	1,815
8th	19,472	1,809
Part 7th	9,744	905



For indicative purposes only. Not to scale.

# Layout Plans

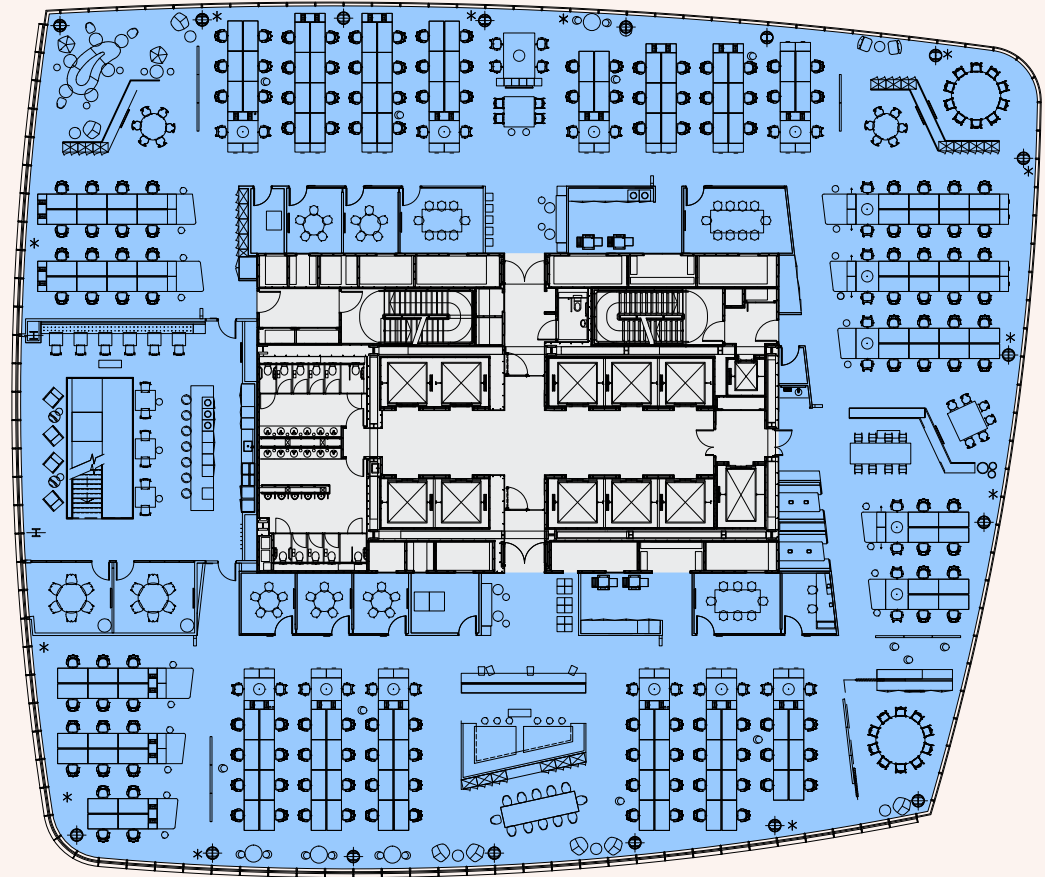
## 10th Floor

19,536 sq ft (1,815 sq m)

Floor	sq ft	sq m
Part 16th	c.10,000	c.929
<b>10th</b>	<b>19,536</b>	<b>1,815</b>
9th	19,536	1,815
8th	19,472	1,809
Part 7th	9,744	905

Workstations	188
5 person meeting rooms	5
6 person meeting rooms	2
8 person meeting rooms	2
10 person meeting room	1
2 person quiet room	1

Occupancy ratio	1:9.7 sq m
Occupancy total	188



For indicative purposes only. Not to scale.

# Layout Plans

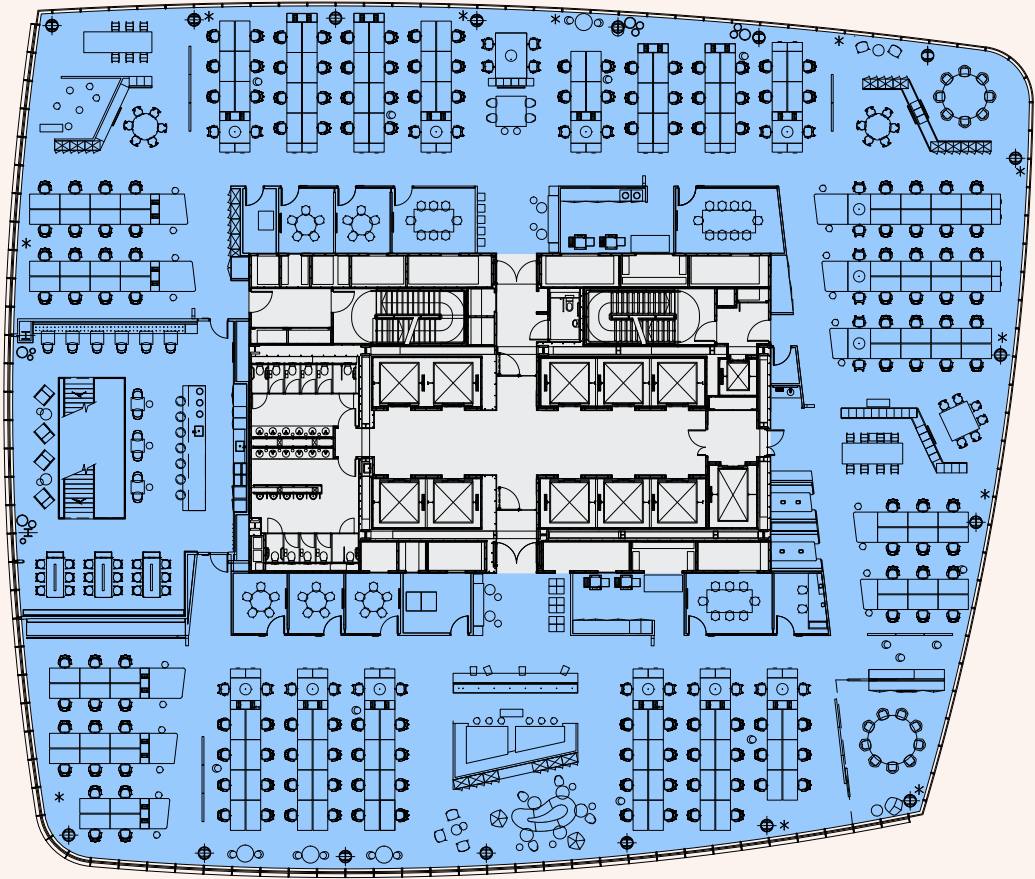
## 9th Floor

19,536 sq ft (1,815 sq m)

Floor	sq ft	sq m
Part 16th	c.10,000	c.929
10th	19,536	1,815
<b>9th</b>	<b>19,536</b>	<b>1,815</b>
8th	19,472	1,809
Part 7th	9,744	905

Workstations	188
5 person meeting rooms	5
8 person meeting rooms	2
10 person meeting room	1
2 person quiet rooms	1

Occupancy ratio	1:9.7 sq m
Occupancy total	188



For indicative purposes only. Not to scale.

# Layout Plans

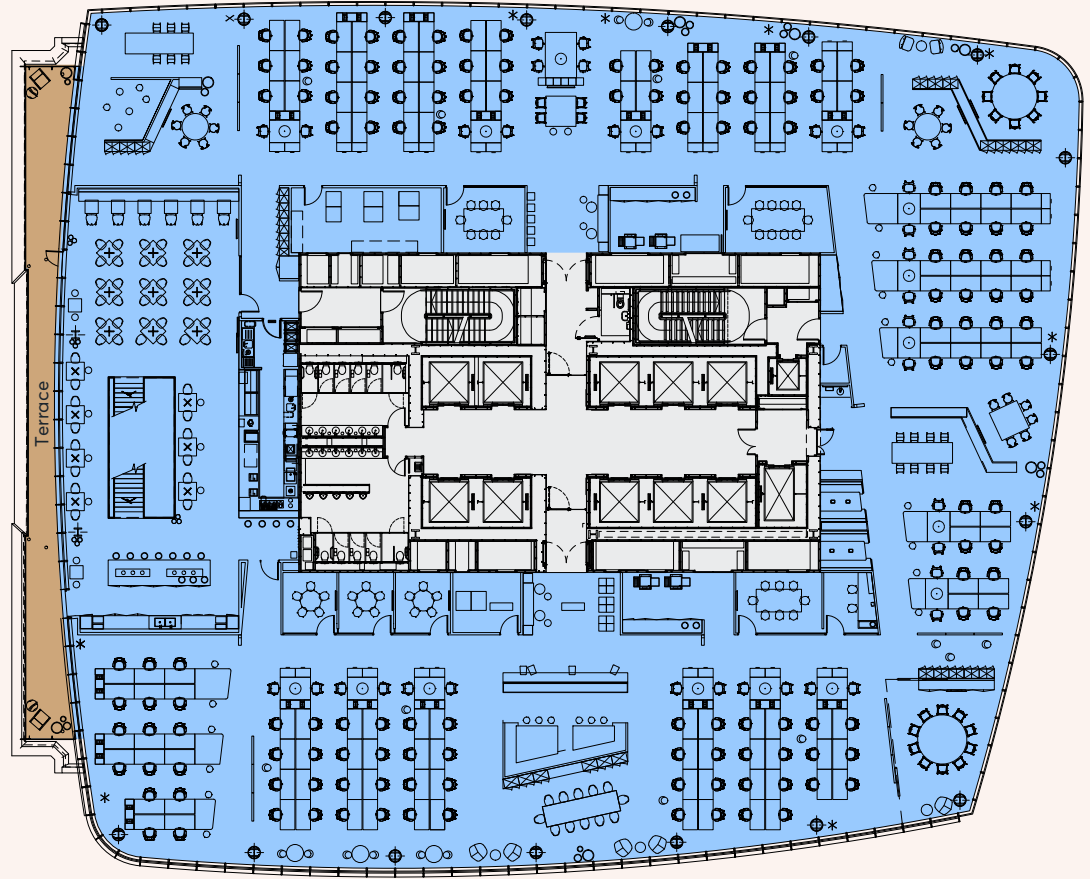
## 8th Floor

19,472 sq ft (1,809 sq m)

Floor	sq ft	sq m
Part 16th	c.10,000	c.929
10th	19,536	1,815
9th	19,536	1,815
<b>8th</b>	<b>19,472</b>	<b>1,809</b>
Part 7th	9,744	905

Workstations	172
5 person meeting rooms	3
8 person meeting rooms	2
10 person meeting room	1
2 person quiet room	1

Occupancy ratio	1:10.5 sq m
Occupancy total	172



For indicative purposes only. Not to scale.

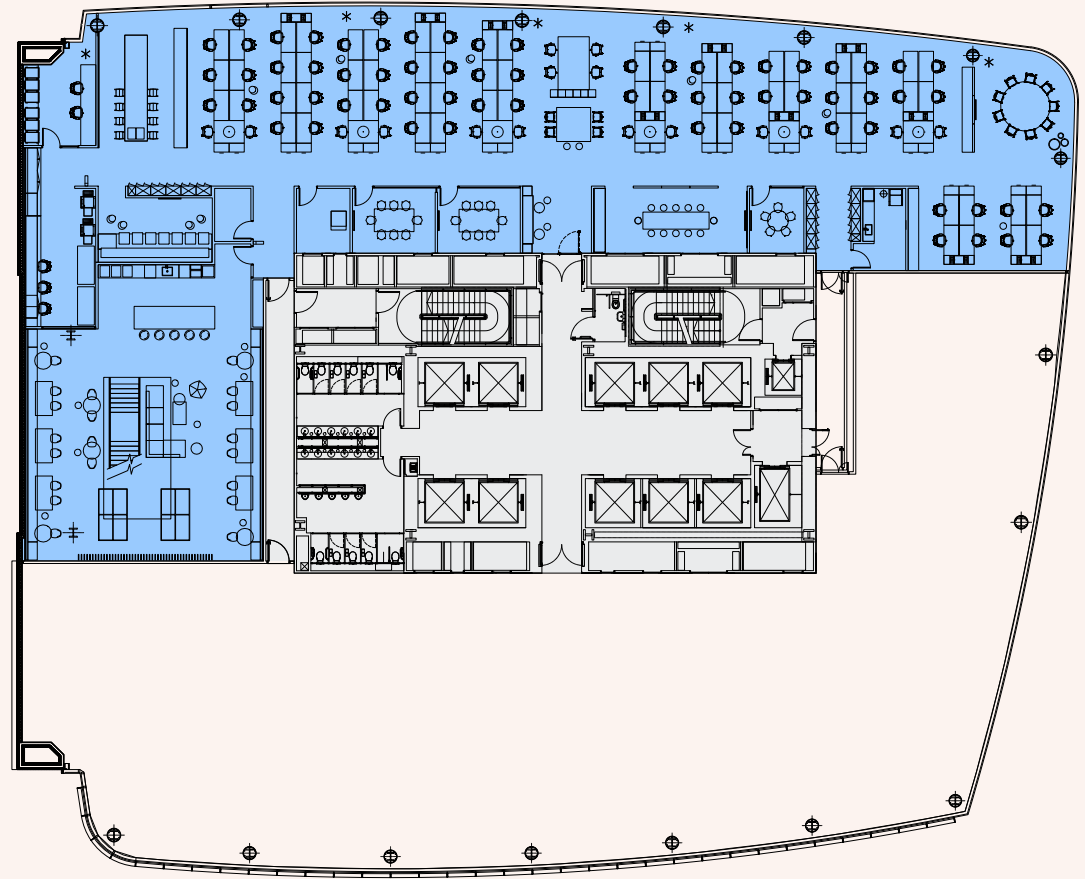
# Layout Plans

## Part 7th Floor 9,744 sq ft (905 sq m)

Floor	sq ft	sq m
Part 16th	c.10,000	c.929
10th	19,536	1,815
9th	19,536	1,815
8th	19,472	1,809
<b>Part 7th</b>	<b>9,744</b>	<b>905</b>

Workstations	82
5 person meeting room	1
8 person meeting rooms	2
12 person meeting room	1

Occupancy ratio	1:11.0 sq m
Occupancy total	82



For indicative purposes only. Not to scale.